

SPECIAL SERVICES

STRATEGIC FOCUS

2024-2025

- **FAPE**
- **Timelines**
- **IEP Process**
- **Procedural Guidelines**
- **Compliance Monitoring**
- **CALPADS**
- **SEIS Implementation**

COMPLIANCE

STUDENT LEARNING

- **Equity and Belonging**
- **Special Ed Programs**
- **Service Delivery**
- **Instruction**
- **Curriculum**
- **Inclusion**
- **ULS**
- **Professional Development**

REACH

- **Respect**
- **Empathy**
- **Acceptance**
- **Community**
- **Healing**

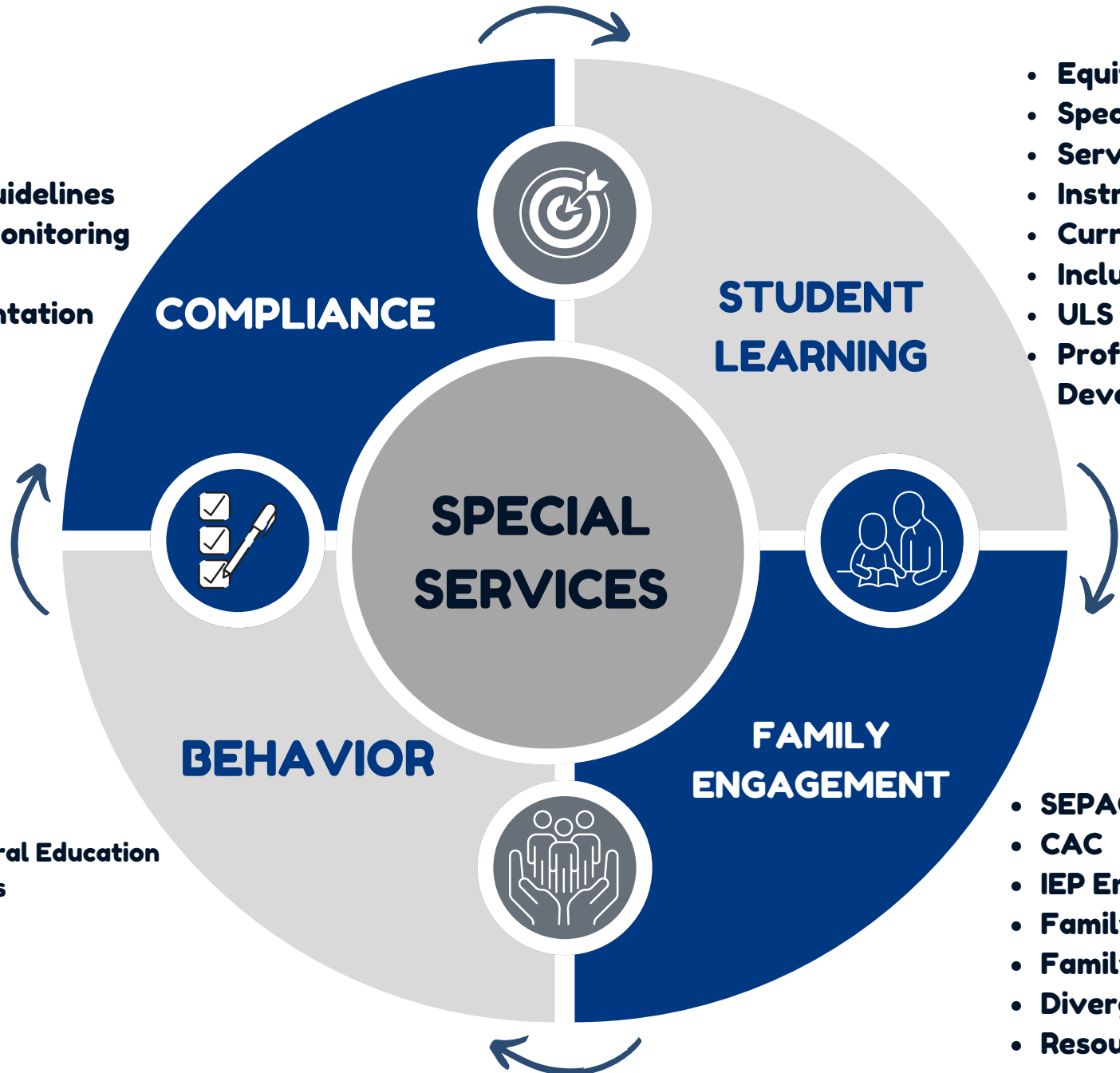
BEHAVIOR

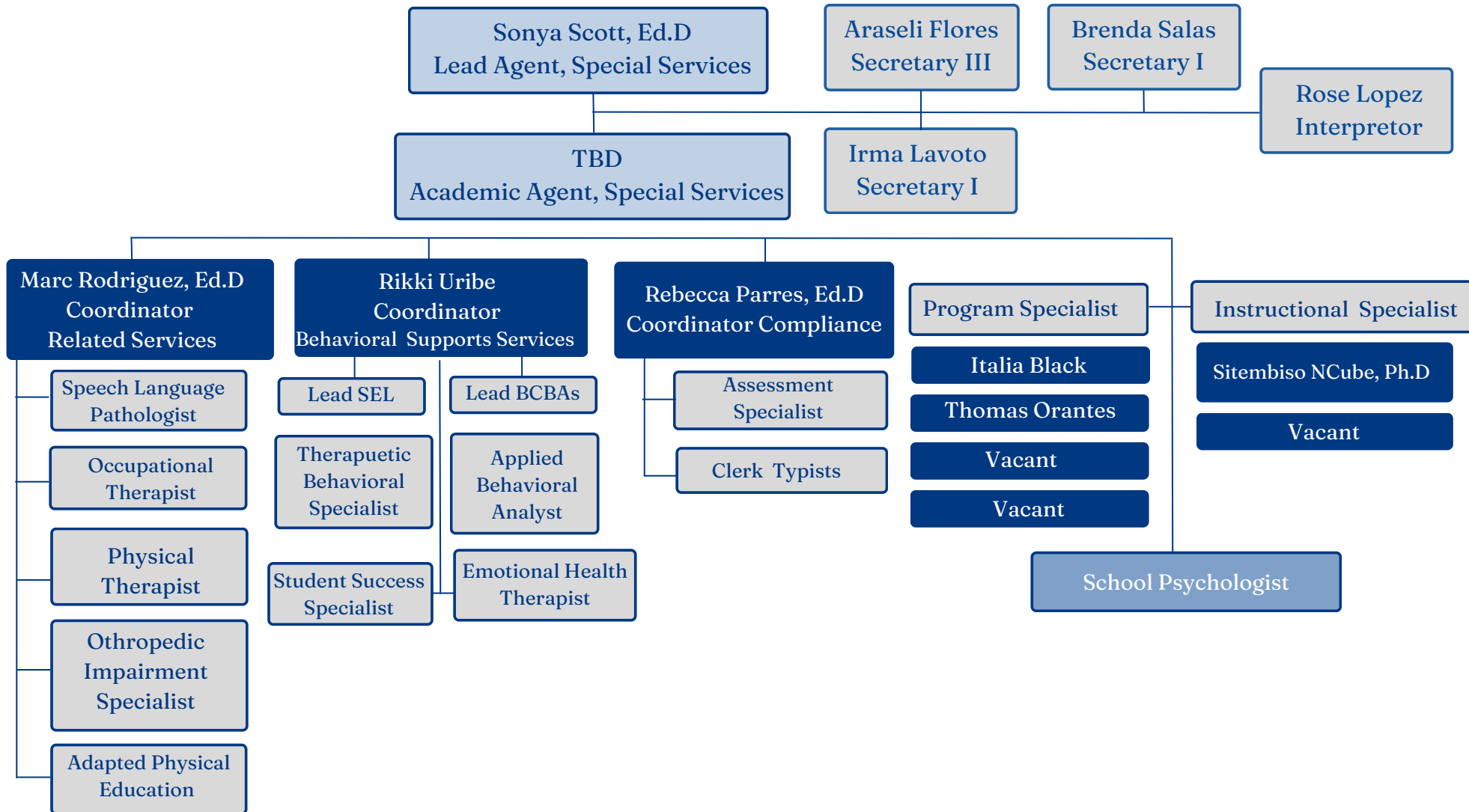
FAMILY ENGAGEMENT

- **SEPAC**
- **CAC**
- **IEP Empowerment**
- **Family Training**
- **Family Events**
- **Divergent Games**
- **Resource Expo**

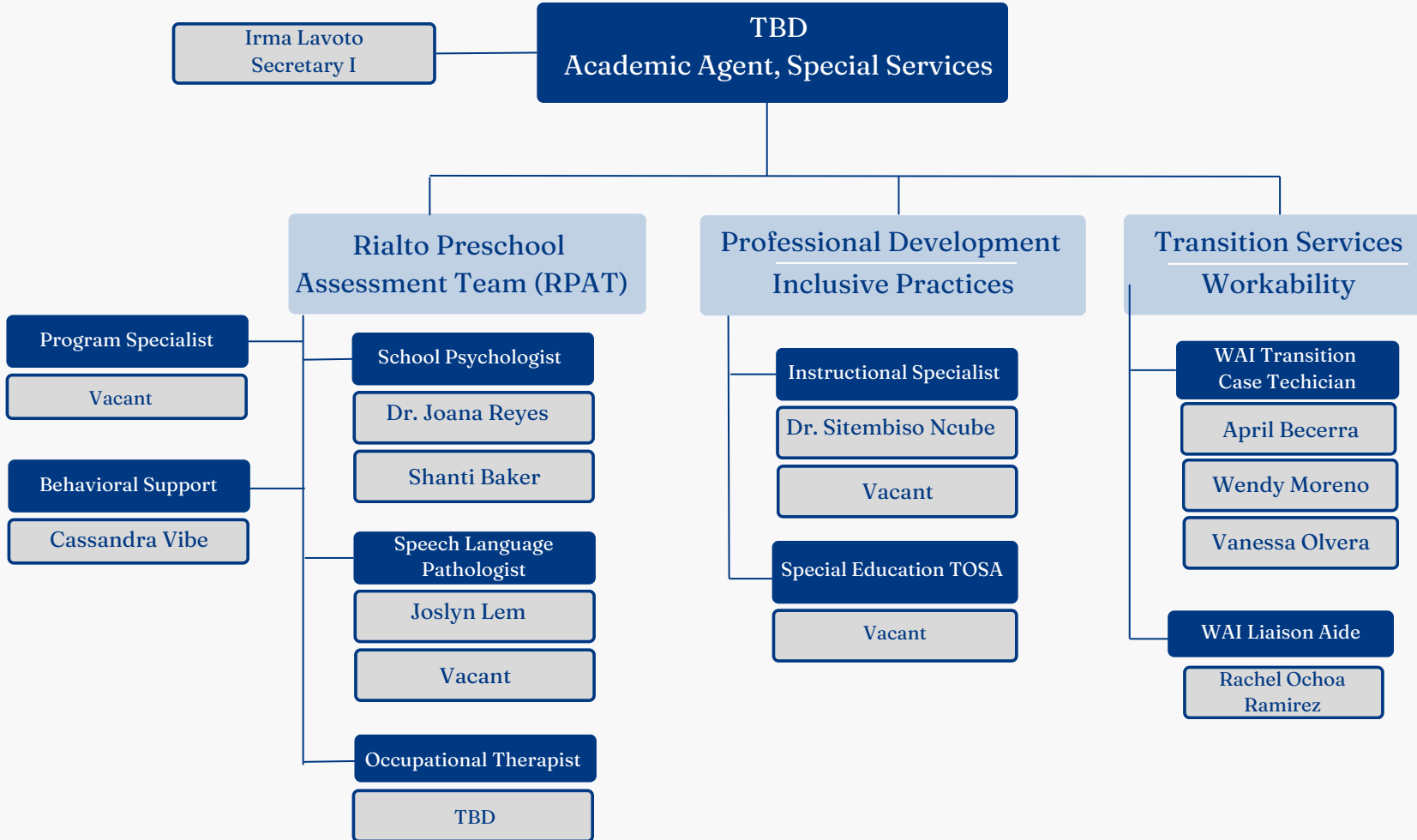
Supports for General Education and Special Services

- **Behavior**
- **SEL**
- **Mentoring**
- **Safety**
- **Mental Health**
- **Trauma Informed Practices**





- STUDENT LEARNING
- Inclusive Practices
- Curriculum
- Programs



Publish Content

Program Specialist

Programs

School Sites

Vacant
Early Childhood Special Education (ECSE) Programs

TK - K
SEED
Preschool

Kordyak ES (ECSE) Bemis ES (ECSE) Casey ES (ECSE)	Werner ES (ECSE) Boyd ES Dollahan ES	Hughbanks ES Fitzgerald ES Simpson ES
---	--	---

Thomas Orantes
Elementary Programs

K- 5
Mild/Mod
SAI(RSP)/SDC

Curtis ES Henry ES Morgan ES	Myers ES Bemis ES Kordyak ES	Dunn ES Preston ES Werner ES
------------------------------------	------------------------------------	------------------------------------

Italia Black
Secondary Programs

6- 12th
Mild/Mod
SAI (RSP)/SDC

Jehue MS Kolb MS Rialto MS	Frisbie MS Kucera MS	Carter HS Rialto HS
----------------------------------	-------------------------	------------------------

Vacant
Moderate/Severe Programs

K - 12
ATP
Mod/Sev SDC

Casey ES Werner ES Kordyak ES	Jehue MS Frisbie MS Rialto MS	Kucera MS Milor HS	Carter HS Rialto HS Eisenhower HS
-------------------------------------	-------------------------------------	-----------------------	---

Programming

IEP Support

Programming

Instruction



Supporting Inclusive Practices Grantee

Instructional Specialist

School Sites - Inclusive Programs

Sitembiso Ncube, Ed.D
Inclusion Programs

K- 5 (Inclusion)
Elementary Sites
ECSE Programs

(PK Inclusion) Preston ES Kordyak ES	Morris ES Kelley ES Trapp ES Garcia ES
--	---

Vacant
Inclusion Programs

6th - 12th
(Inclusion)
Secondary

Jehue MS Kolb MS	Eisenhower HS
---------------------	---------------

STUDENT LEARNING

Inclusive Practices

Curriculum

Programs

Dr. Marc Rodriguez
Coordinator, Related Services

Brenda Salas
Secretary I

Communication Development

Motor Development

Speech Language Pathologists

Physical Therapist

Occupational Therapist

Jaime Alexander

Paulina Escobedo

Jennifer Myers

Dr. April McElfish

James Bierman

Brenda Aguiano

Allison Farr

Kristi Payne

Orthopedic Impairment
Specialist

Bernardette
Mendoza

Jamie Billings

Yasmin Fuller

Margot Perez

Monica Muglia

Mary Nguyen

Brittney Brown

Summer Harp

Ian Reed

Adapted Physical
Education

Uverenise Rosas
Leon

Rey Bustillo

Joslyn Lem

Caleigh Richard

Bryan Douglass

Jourdan Santibanez

Jerry Butanda

Sarah Lloyd

Cecilia Scott

Bill Evans

Vacant

Raquel Castro

Chareca Lyons

Jennifer Truett

Robert Cook

Roxanna Maldonado

Sarah Vaca

Tony Kounas

Rehannon Cote

Melanie Martinez

Jazmin Vargas

Jeff Martinez

Jennifer Davidson

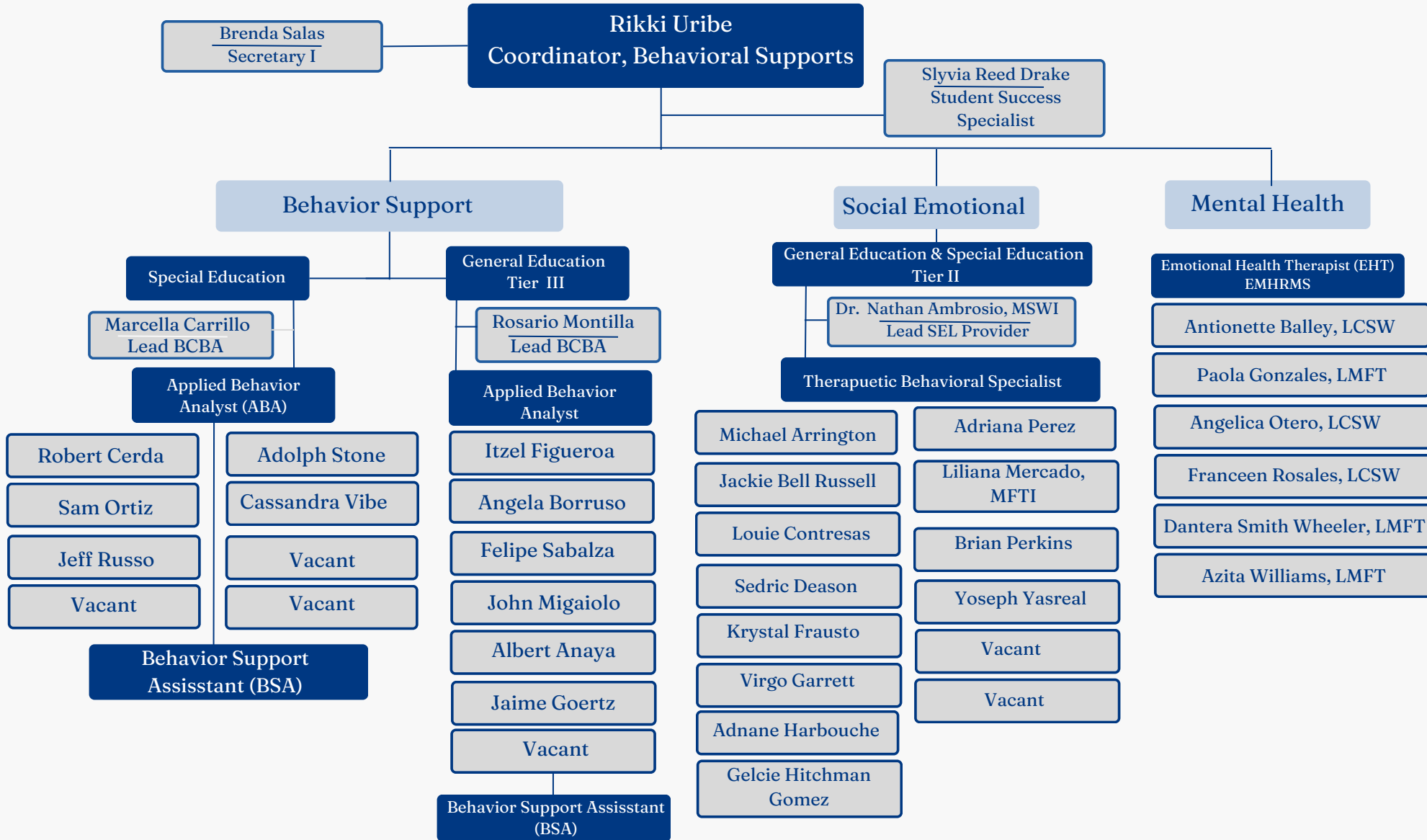
Erin Meers

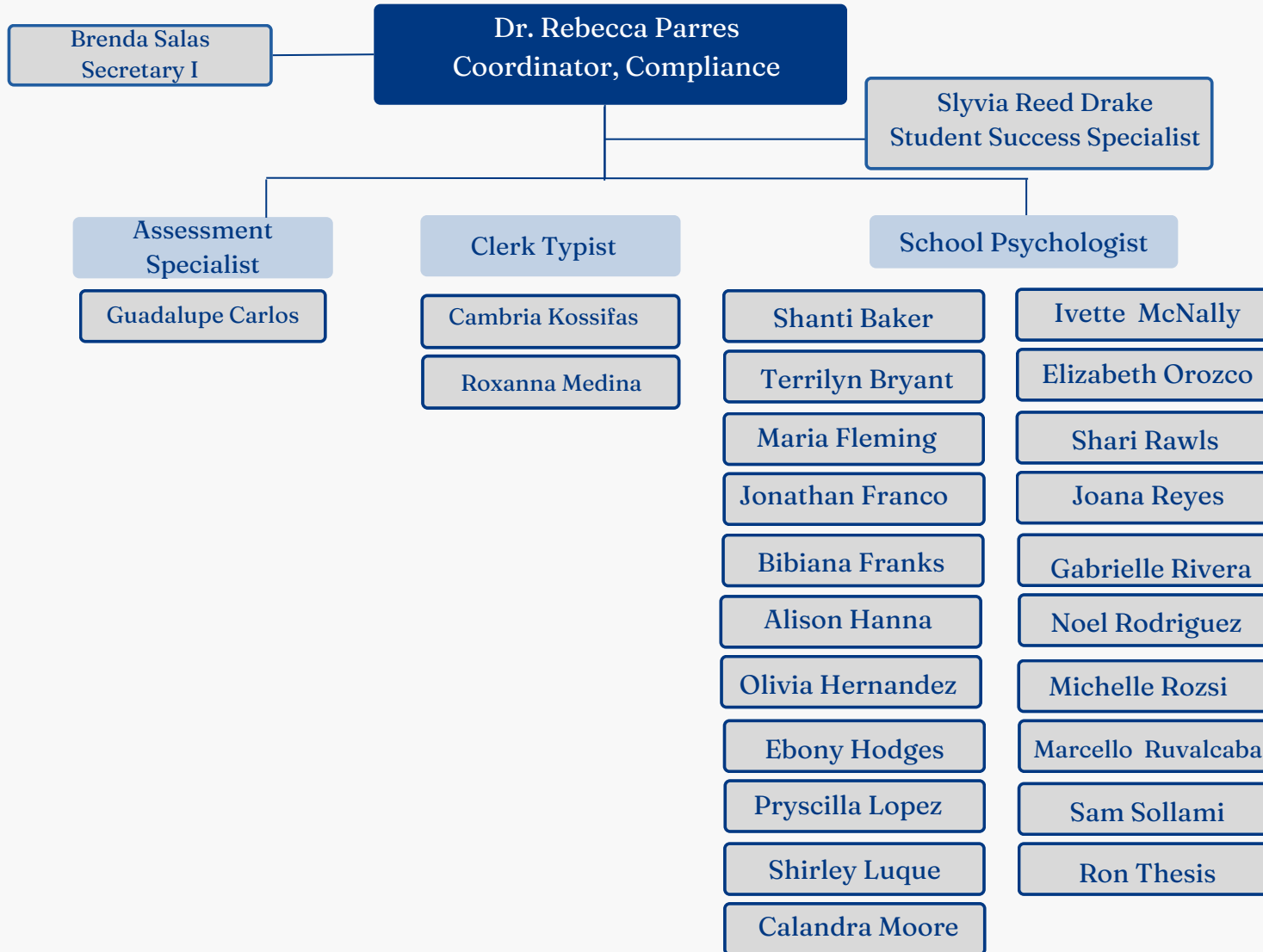
Vacant

Harold Turner

Maritza Mendoza







- COMPLIANCE
- Home/Hospital
- County
- Non Public Schools
- Service Logs
- Records Request